



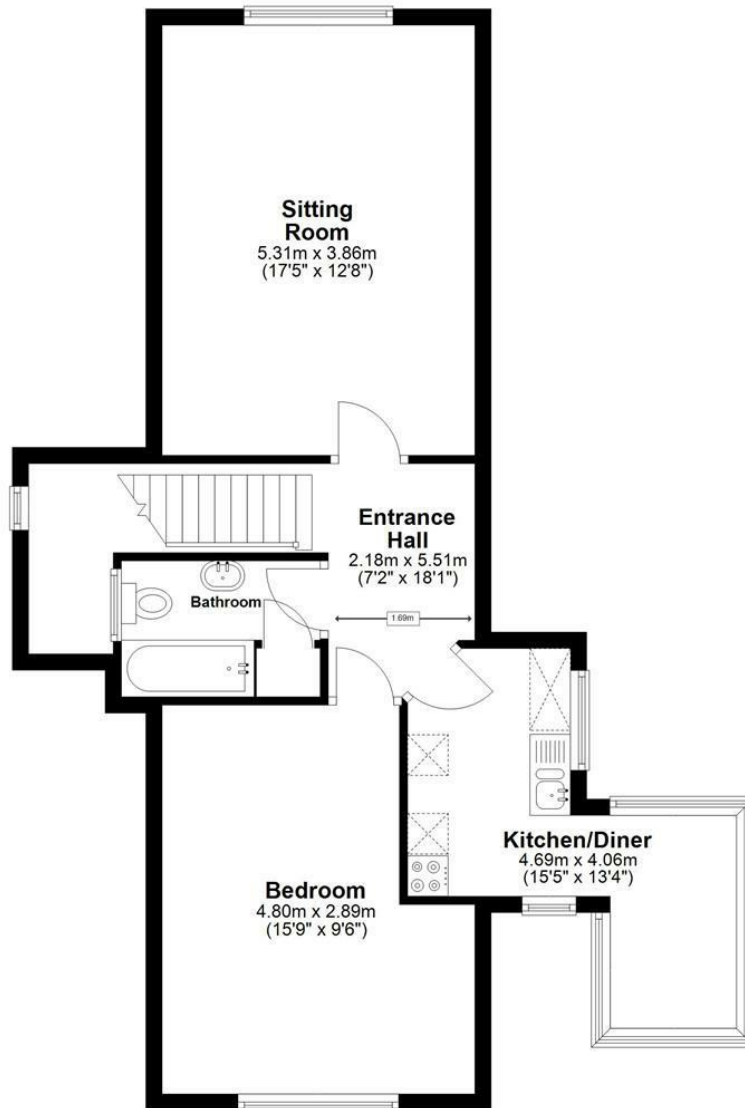
Flat 14, 37 Fowlers Road, Salisbury, Wiltshire, SP1 2QP

£895 PCM

A recently refreshed one-bedroom penthouse flat located within walking distance of Salisbury city center. The flat has been freshly painted and newly carpeted. The layout includes a spacious lounge with a large window and a skylight, creating a bright and airy atmosphere. The lounge leads to a unique kitchen breakfast room with space for a washing machine, fridge freezer, and a well-proportioned breakfast room with panoramic windows overlooking Salisbury city center and its surrounding green pastures. Additionally, there is a large double bedroom and a good-sized bathroom with a shower over the bath. The flat also features a pleasant communal garden at the front and rear of the property. The property also benefits from gas central heating.

Top Floor Apartment

Approx. 63.1 sq. metres (678.7 sq. feet)



Energy Efficiency Rating		Current	Potential
Very energy efficient - lower running costs			
(92 plus) A			
(81-91) B			
(69-80) C		76	76
(55-68) D			
(39-54) E			
(21-38) F			
(1-20) G			
Not energy efficient - higher running costs			
England & Wales		EU Directive 2002/91/EC	

WHITES
 Castle Chambers, 47 Castle Street,
 Salisbury, Wiltshire, SP1 3SP
 01722 336422
www.hwwhite.co.uk
residential-sales@hwwhite.co.uk

